

# Reception Console Upgrade Guide

Jan 2007  
Version 13.1

## Table of Contents

---

Table of Contents .....	2
1 Upgrade process .....	3
1.1 Upgrading.....	3
1.1.1 Installation wizard .....	3
1.1.2 Installation complete .....	4
Copyright Notice .....	4
Trademarks.....	4

## Overview

This document will cover the steps to allow for an upgrade of RC 4.0.5 to RC 13.1

## 1 Upgrade process

---

### 1.1 Upgrading

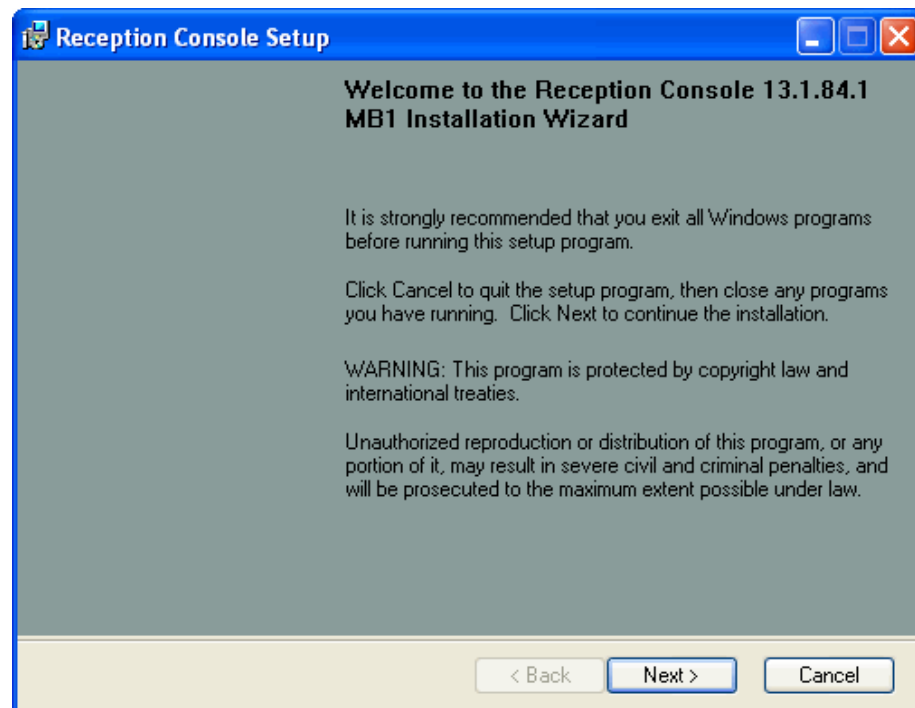
The installation of 6DegreesIP Reception Console uses a web based deployment mechanism to guide the user through the installation process. **The executable you need to download and the User and Admin guides can be found on [info.onvoip.net](http://info.onvoip.net).**

Once the software has been downloaded, the user initiates a standard Windows installer wizard that guides them through the simple installation process.

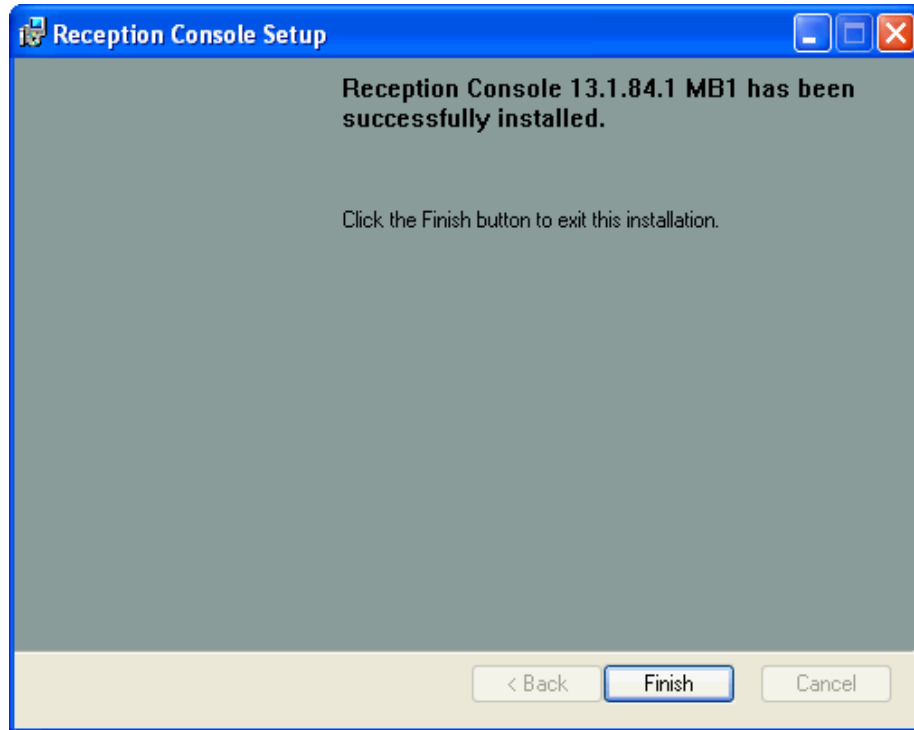
#### 1.1.1 Installation wizard

Double click on the downloaded executable.

Users should follow the prompts to the **next** windows, then **finish**.



... more windows will appear, then the **finish** window.



### 1.1.2 Installation complete

Users can now use RC 13.1

### Copyright Notice

COPYRIGHT 1997-2007 NEW GLOBAL TELECOM, INC. All Rights Reserved.

### Trademarks

Microsoft, Windows, and the Windows logo are registered trademarks of Microsoft Corporation. Other product names mentioned in this manual may be trademarks or registered trademarks of their respective companies and are hereby acknowledged.

This document is printed in the United States of America.