

# **Reception Console**

## Upgrade Guide

**JULY 2009**

Version 6.0

---

**Table of Contents**

---

1	Document Changes.....	3
2	Overview .....	3
3	Upgrade process .....	3
3.1	Upgrading.....	3
3.1.1	Installation wizard .....	3

## 1 Document Changes

---

July 28, 2009 – Initial document created.

## 2 Overview

---

This document will cover the steps required to upgrade previously released versions of Reception Console 4.x to version 6.0.

## 3 Upgrade process

---

### 3.1 Upgrading

The Reception Console installation uses a web based deployment mechanism to guide the user through the installation process. **The installation executable and corresponding documentation can be obtained from [info.onvoip.net](http://info.onvoip.net).** Once the software has been downloaded, the user initiates a standard Windows installer wizard that guides them through the simple installation process.

#### 3.1.1 Installation wizard

1. Double-click on the **Reception Console Installation** executable.

The first page of the Installation Wizard appears.

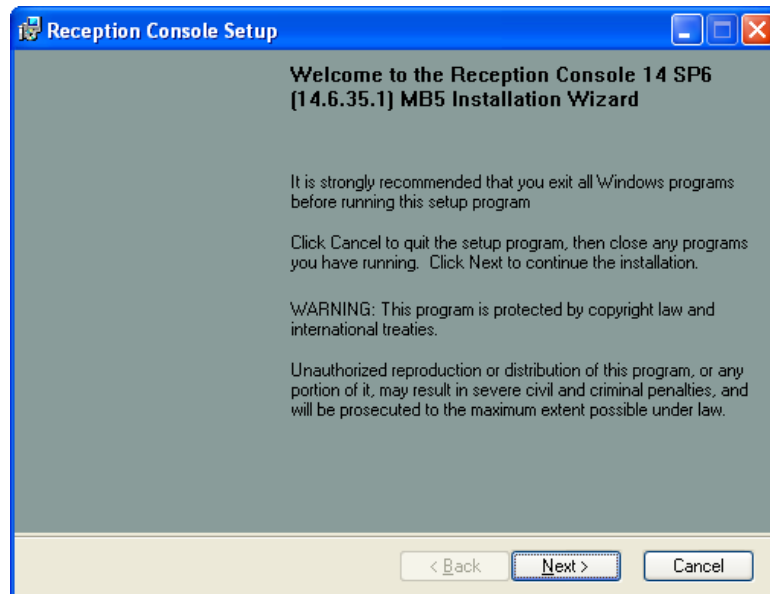


Figure 1 Reception Console Installation Wizard – Page 1

2. Click **Next**.

The second page of the Installation Wizard appears.

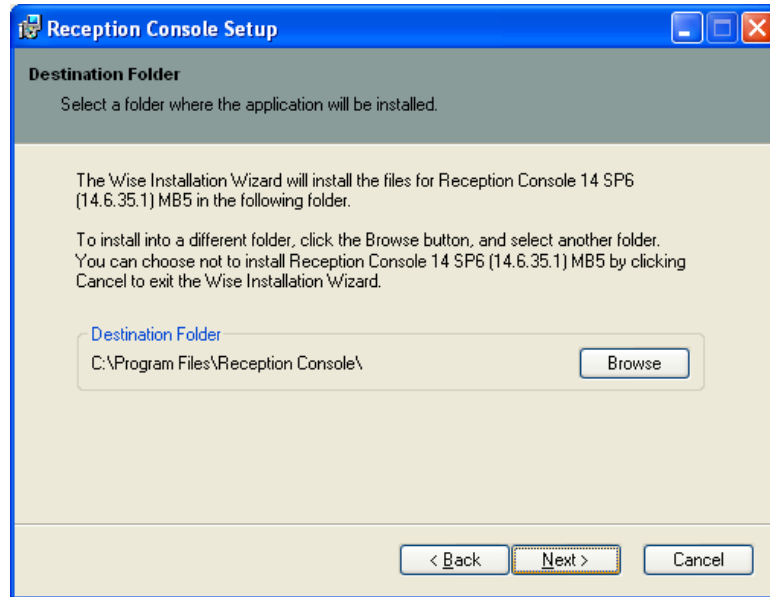


Figure 2 Reception Console Installation Wizard – Page 2

3. Click **Next** to accept default value at the **Destination Folder** screen. The third page of the Installation Wizard appears.

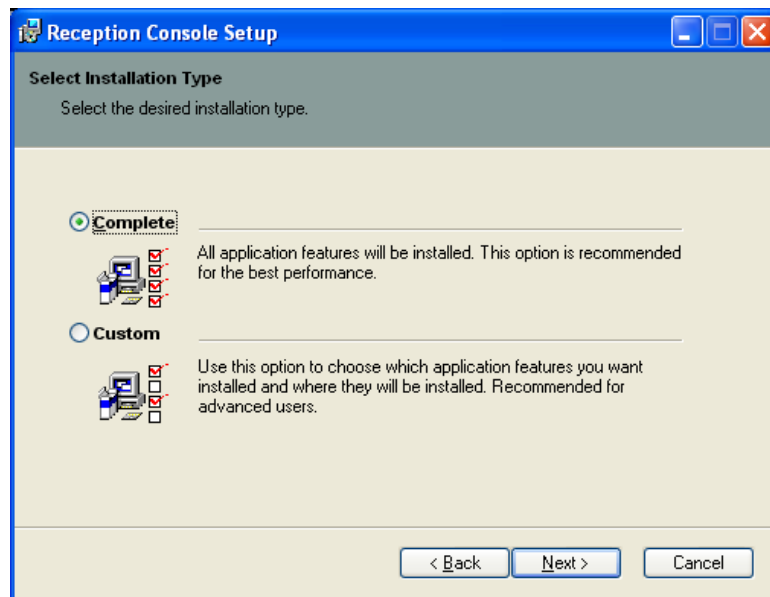


Figure 3 Reception Console Installation Wizard – Page 3

4. Verify the **Complete** installation type is selected and click **Next**. The fourth page of the Installation Wizard appears.

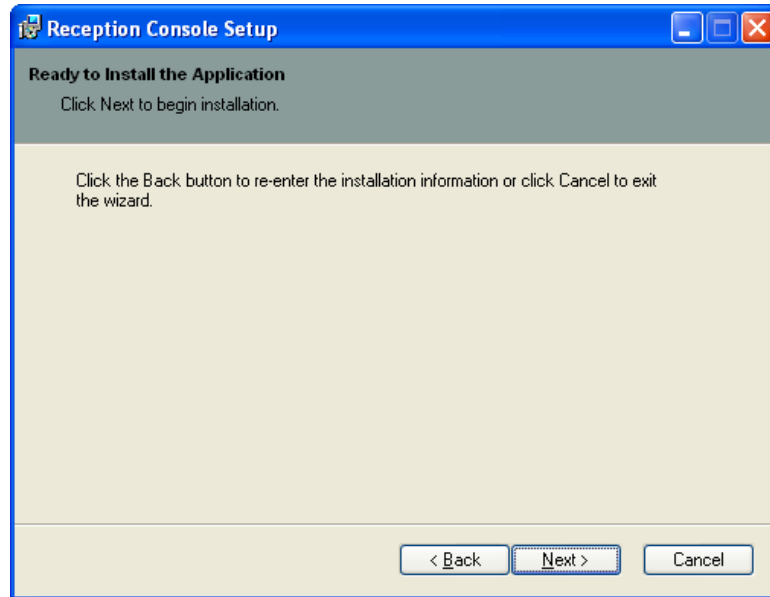


Figure 4 Reception Console Installation Wizard – Page 4

5. Click **Next** at the **Ready to Install the Application** screen.

The fifth page of the Installation Wizard appears.

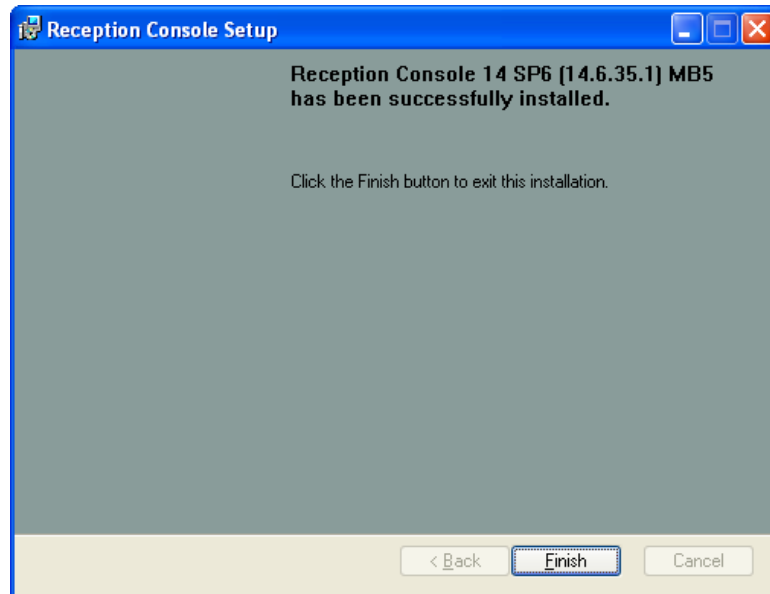


Figure 5 Reception Console Installation Wizard – Page 5

6. Click **Finish**. The installation is complete.